



WALKERSXCHANGE

ESTATE AGENTS

Front Street, Burnopfield

County Durham

Inviting offers in the region of £140,000



- Two bedroom terraced property
- Newly renovated throughout
- Perfect starter home
- Off street parking
- Modern kitchen and bathroom
- South facing private courtyard
- Village location



WALKERSXCHANGE

ESTATE AGENTS

Incredible Location

Summary:

Inviting offers in the region of £140,000 for this newly renovated two bedroom terraced family home. This property is ideally suited for first time buyers or a young family. The house provides modern decor throughout along with a newly fitted kitchen and bathroom. The accommodation briefly comprises: living room, kitchen/diner, two double bedrooms, family bathroom and outhouse within the courtyard. **We envisage a high amount of interest and encourage an early viewing.**





WALKERSXCHANGE

ESTATE AGENTS



Internally

The ground floor of the property enters into a spacious entrance lobby with stairs leading to the first floor and internal door access into the front facing living room. The front reception room has been tastefully decorated in modern tones and includes an exposed chimney breast with beautiful brickwork, traditional ceiling coving and newly fitted carpet.

The kitchen/diner is positioned to the rear of the property and has been fitted with a modern kitchen, including an array of shaker style wall and base units with contrasting laminate worktops. Integrated appliances include electric oven, electric hob with overhead extractor fan and dishwasher.

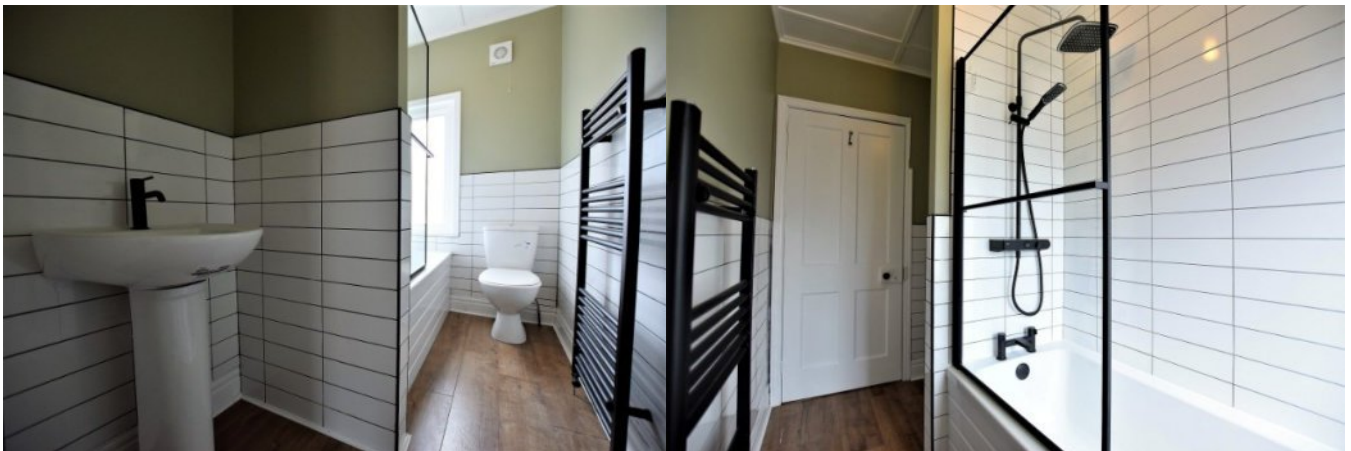
The first floor landing offers two spacious double bedrooms, both have been stylishly decorated and are presented with brand new carpets. The main bedroom also includes a walk in storage cupboard with shelving and rail storage. The fabulous family bathroom includes a three piece bathroom suite: fitted bathtub with overhead shower, washbasin and low level WC. The modern decor has been contrasted with part tiled walls and stunning black fixtures and fittings.



WALKERSXCHANGE

ESTATE AGENTS

17 Front Street, Internal photos





WALKERSXCHANGE

ESTATE AGENTS

Externally






The rear of the property provides an extensive full width graveled driveway allowing for off street parking. Concrete steps lead down to the private courtyard, enclosed by bricked walls and wooden fencing. A useful outhouse provides additional storage.





FLOOR PLAN



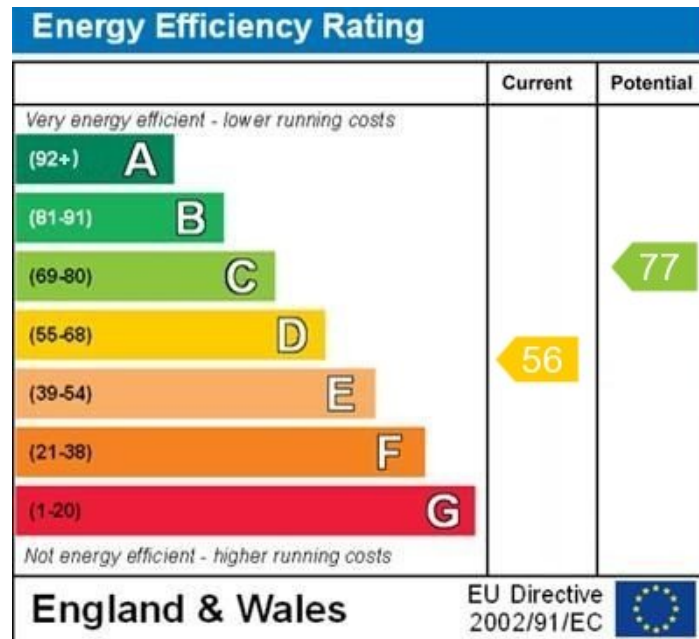
-
-  **Living Room** - 4.1m x 5m (13'5" x 16'4") MAX
 -  **Kitchen/Diner** - 5.6m x 4.5m (18'4" x 14'9") MAX
 -  **Main Bedroom** - 4.1m x 5m (13'5" x 16'4")
 -  **Bedroom 2** - 3.82m x 3.8m (12'6" x 12'5") MAX
 -  **Bathroom** - 2.76m x 2m (9'0" x 6'6") MAX
-

SELLING PRICE OFFERS IN REGION OF £140,000



WALKERSXCHANGE

ESTATE AGENTS



WWW.EPC4U.COM



Disclaimer

Whilst we endeavour to ensure our sales particulars are accurate and reliable, they do not constitute or form part of an offer or any contract and none is to be relied upon as statements of representation or fact. Any services, systems and appliances listed in this specification have not been tested by WalkersXchange therefore we cannot give a guarantee as to their operating ability or efficiency. All measurements have been taken as a guide to prospective buyers only.